



HOME - AMERICAN RESCUE PLAN



HOME-AMERICAN RESCUE PLAN (HOME-ARP)

- Funds released as a part of the American Rescue Plan Act in response to the COVID-19 Pandemic
 - Administered within the HOME Investments Partnership Program
 - Focused on the need for homelessness assistance and supportive services



Image Source: Microsoft 365 Stock Images

HOME-ARP- GENERAL INFORMATION

- Nationally - \$5 billion of supplemental HOME funds for assistance to homeless and other vulnerable populations, facilitating
 - Capital investment in permanent housing for qualifying populations
 - Development of non-congregate Shelter
 - Provision of rental assistance or supportive services
- Allocated to participating jurisdictions via HOME formula
 - Highly targeted to poverty, renters in poverty, cost, availability and condition of housing stock
 - State of Wisconsin Allocation: **\$41,849,563.00**



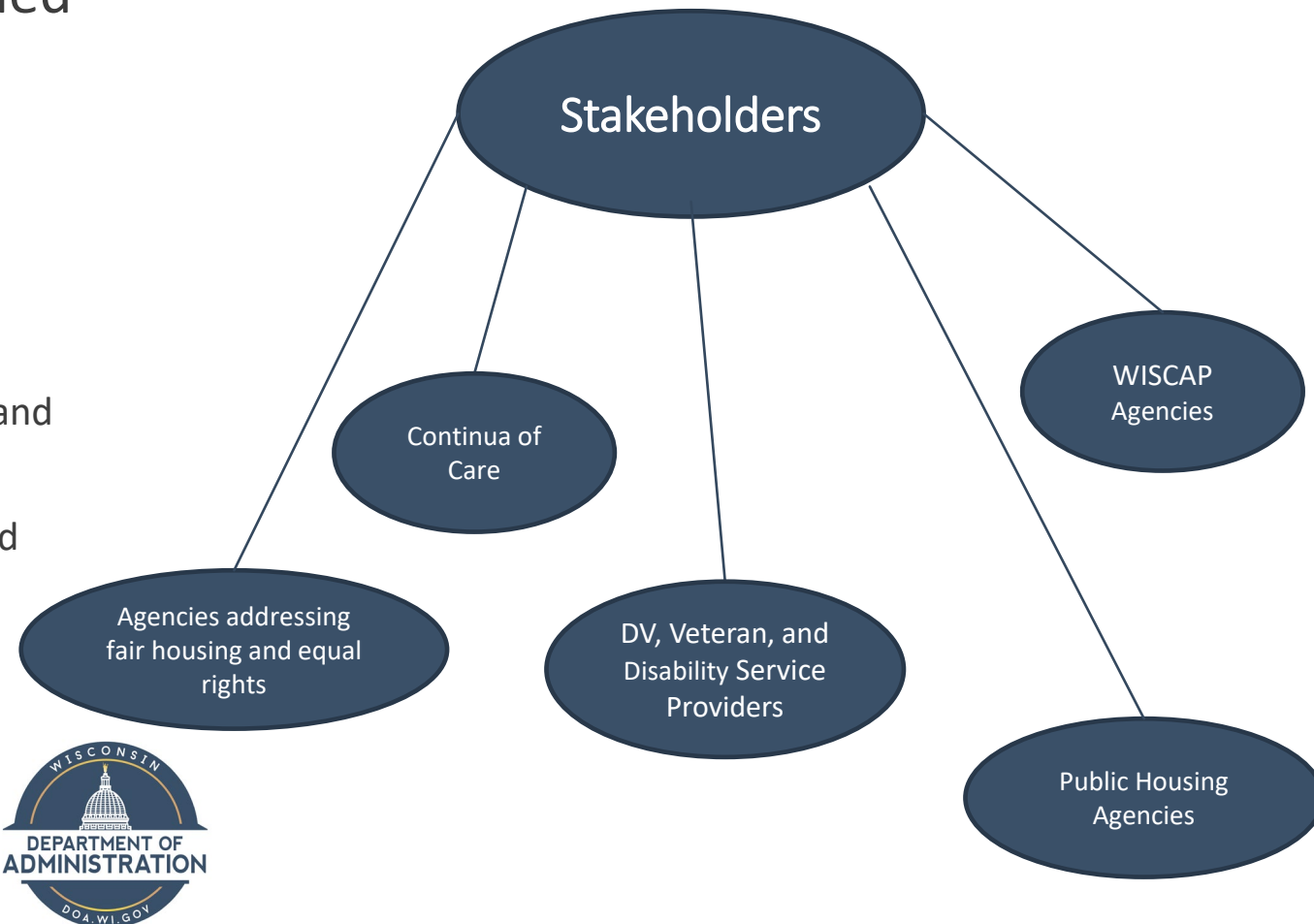
STATE OF WISCONSIN HOME-ARP FUNDING

	Funding Amount	Percent of the Grant	Statutory Limit
Supportive Services	\$10,214,891		
Acquisition and Development of Non-Congregate Shelters	\$0		
Tenant Based Rental Assistance (TBRA)	\$0		
Development of Affordable Rental Housing	\$27,108,716		
Non-Profit Operating	\$175,000	0%	5%
Non-Profit Capacity Building	\$175,000	0%	5%
Administration and Planning	\$4,185,956	10%	15%
Total HOME ARP Allocation	\$41,859,563		



HOME-ARP ALLOCATION PLAN

- Stakeholders and general public provided feedback on how to best utilize funds
- Accepted by HUD in October 2022
 - Substantial Amendment accepted October 2023
 - Reallocated TBRA funding to Nonprofit Operating and Capacity Building
 - Established use of Expanded Coordinated Entry and allowable preferences



QUALIFYING POPULATIONS

Funds must primarily benefit “qualifying populations”

- Homeless *
- At-risk of homelessness*
- Fleeing or attempting to flee domestic, dating, or sexual violence, stalking, or human trafficking
- “Other populations” – where supportive services or assistance would prevent the family’s homelessness or serve those with the greatest risk of housing instability
- Veterans and families that include a veteran member that meet one of the preceding criteria

*as defined in the McKinney-Vento Homeless Assistance Act



CLIENT SELECTION AND COORDINATED ENTRY

- All HOME-ARP Supportive Service and Rental Housing projects must use the Continuum of Care's Expanded Coordinated Entry system to screen and identify qualifying households in service area.
- Preferences are optional, but all QPs must be served.
- Limitations are not allowed
- The State of Wisconsin's HOME-ARP Allocation allows for the adoption of the following preferences for HOME-ARP Supportive Service Activities:
 - Preference #1: Individuals experiencing homelessness, as defined in 24 CFR 91.5.
 - Preference #2: Individuals at risk of homelessness, as defined in 24 CFR 91.5.
 - Preference #3: Persons fleeing or attempting to flee domestic violence, dating violence, sexual assault, stalking, or human trafficking, as defined by HUD



HOME-ARP ELIGIBLE ACTIVITIES

Development of Affordable Housing

- 70% of units reserved for Qualifying populations
- 30% for Low-Income tenants per standard HOME affordability rules

Supportive Services

Supportive Services eligible under McKinney-Vento Act

Tenant Based Rental Assistance (TBRA)*

Acquisition/development of non-congregate shelter units*

*Development of NCS and TBRA are not anticipated activities in the State of Wisconsin's HOME-ARP Program



SUPPORTIVE SERVICES ACTIVITIES

■ Wide range of eligible services including:

- Childcare
- Transportation
- Food for program participants

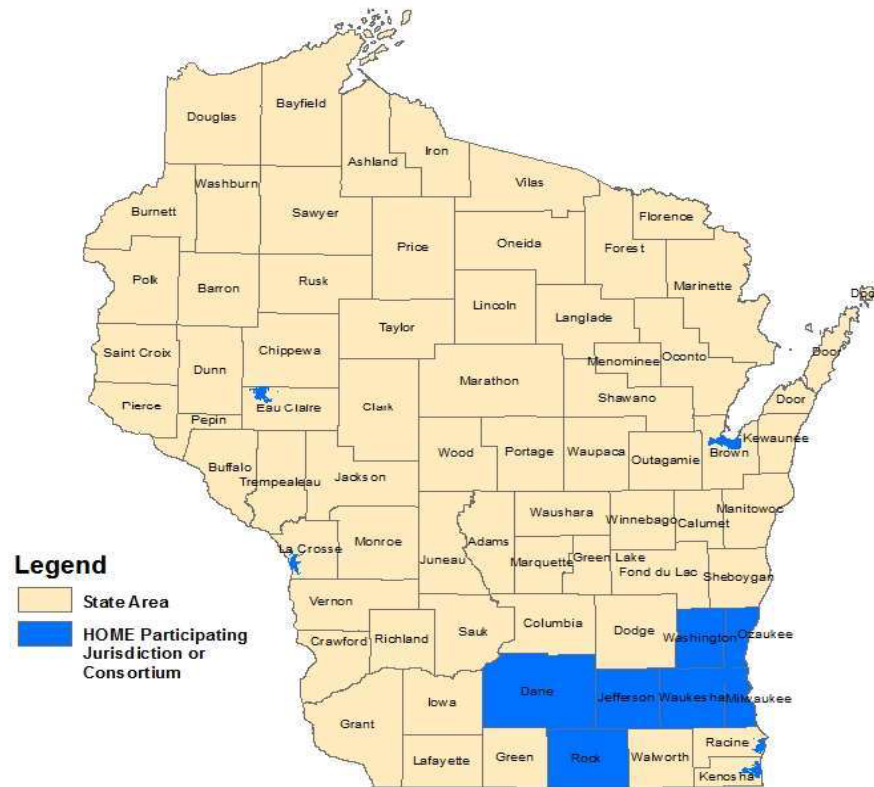
- Education Services
- Employment Assistance and Training
- Housing Cost Assistance

- Benefits and services navigation
- Case Management
- Legal Services
- Credit Counseling

- Landlord/Tenant Liaison Services
- Mediation
- Housing Counseling and Stability Case Management

- Mental Health Services
- Outpatient Health Services
- Substance Abuse Treatment Services





HOME Participating Jurisdictions and Consortia are cities and urban counties which receive HOME funding directly from HUD. State Areas fall into the "state administered" program, under which HUD provides HOME funds to States to distribute to non HOME PJs and Consortia.

HOME Participating Jurisdiction Cities

- Eau Claire
- Green Bay
- Kenosha
- La Crosse
- Madison
- Milwaukee
- Racine

HOME Consortia

- Dane County
- Janesville Consortium (Rock County)
- Milwaukee County
- Waukesha County Consortium (Waukesha, Jefferson, Washington, Ozaukee Counties)

STATE OF WISCONSIN (DEHCR) HOME-ARP ELIGIBILITY

The State can allocate funds to the counties/areas outside of the blue entitlement areas (Participating Jurisdictions/Consortia)

IN THE MEANTIME...

- Visit HUD exchange for more info on HOME-ARP: <https://www.hudexchange.info/programs/home-arp/>
- Review HUD's Notice on the rules and regulation of the program: <https://www.hud.gov/sites/dfiles/OCHCO/documents/2021-10cpdn.pdf>
- More information on the definition of qualifying populations:
 - https://files.hudexchange.info/resources/documents/HomelessDefinition_RecordkeepingRequirementsandCriteria.pdf
 - https://files.hudexchange.info/resources/documents/AtRiskofHomelessnessDefinition_Criteria.pdf
- Keep an eye out for updates on DEHCR's website: <https://energyandhousing.wi.gov/Pages/AgencyResources/home-arp.aspx>



THANK YOU!

Madalyn Grau | Grants Specialist - Advanced
Department of Administration
Division of Energy, Housing, and Community Resources
Madalyn.Grau@wisconsin.gov
Direct Phone: 608.266.1217
Cell: 608.220.3983
Pronouns: She, Her, Hers



THANK YOU

